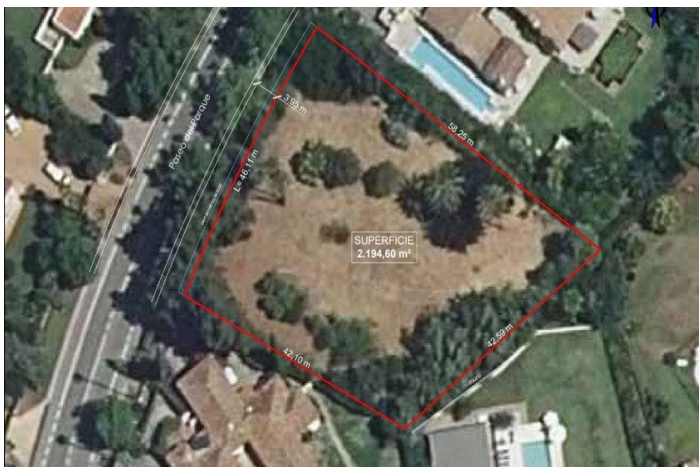




Land for sale in Sotogrande Costa, Sotogrande

2,100,000 €

Reference: HQ5066656 Plot Size: 2,200m²





Costa de la Luz, Sotogrande Costa

Set in Sotogrande Costa's prestigious Kings and Queens neighborhood, this expansive 2,200 m² plot offers a rare chance to design and build a custom luxury home in one of the area's most sought-after streets — Paseo del Parque. Elevated above its surroundings and ideally oriented to capture the morning and midday sun, the plot offers an uncommon dual perspective: sea views and picturesque mountain scenery. This blend of coastal and countryside outlooks is a true rarity in this prime location. Perfectly situated close to golf, beaches, the marina, and top international schools, this is a unique opportunity for those seeking exclusivity, elegance, and potential in one of southern Spain's most elite communities. Property Features: - Prime position within the Kings and Queens area - Stunning dual-aspect views of the sea and mountains - Elevated and sunny orientation - One of the few remaining buildable plots in this elite zone The plot, includes a variety of mature palm trees, cypresses, and olive trees, that add elegance and charm anchoring this plot to its ideal location. Additionally the the following documentation is already in place for those looking to expedite the building process; Topographical Survey, Geotechnical Study confirming excellent soil quality, and Basic and Execution Architectural Projects



Features:

Features

Near Transport

Views

Country

Setting

Close To Golf

Close To Port

Close To Sea

Close To Shops

Close To Town

Close To Schools

Category

Luxury