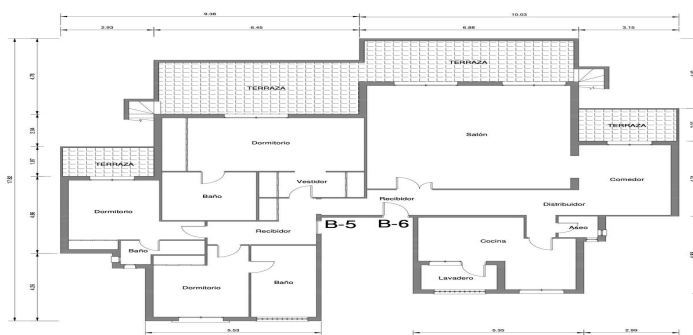




## Penthouse Duplex for sale in Los Arqueros, Benahavís

995,000 €

Reference: HQ5222125 Bedrooms: 3 Bathrooms: 3 Build Size: 200m<sup>2</sup> Terrace: 180m<sup>2</sup>





## Costa del Sol, Los Arqueros

A rare chance to buy this purpose built double penthouse frontline to the Los Arqueros golf. This penthouse benefits from maybe the best position in Los Arqueros and offers amazing inside and outside space with ample terraces plus a 24m long roof terrace with storeroom and BBQ area. A very popular community within Los Arqueros Golf consisting of 2 and 3 bedroom apartments and penthouses, being just a short walk to the Clubhouse and restaurant, pro shop and driving range. Built over two phases, all apartments have a south or south westerly aspect overlooking the established 18-hole Los Arqueros golf course and the new 9-hole course towards the Mediterranean Sea. La Finca, as expected, offers the high standards expected from a Taylor Wimpey build, and includes cream marble flooring throughout, fitted designer kitchen with Bosch appliances and hot and cold A/C. Set in mature landscaped gardens residencial La Finca boasts two communal swimming pools. Los Arqueros Golf & Country Club is a prestigious golf club located in the municipality of Benahavís, 15 min from Marbella, in the province of Malaga, Spain. The club was designed by the legendary Spanish golfer Severiano Ballesteros and opened its doors in 1991. It is known for its beautiful setting in the Sierra de Ronda foothills, offering panoramic views of the Mediterranean Sea and the surrounding mountains. The history of Los Arqueros Golf & Country Club dates back to the late 1980s when Ballesteros, who had achieved great success as a professional golfer, embarked on a career in golf course design. He collaborated with Spanish architect Antonio García Garrido to create a challenging and picturesque golf course in the Costa del Sol region. The construction of Los Arqueros Golf & Country Club began in 1989, and it was officially inaugurated in 1991. The course covers an area of approximately 60 hectares and features 18 holes spread across a hilly landscape with numerous natural obstacles such as ravines, streams, and lakes. Ballesteros' design aimed to incorporate the natural features of the land while creating a demanding yet enjoyable golfing experience for players of all levels.



## Features:

### Features

Private Terrace  
Storage Room  
Ensuite Bathroom  
Marble Flooring  
Double Glazing  
Fitted Wardrobes  
Solarium  
Gym  
Paddle Tennis  
Tennis Court  
Utility Room  
Restaurant On Site  
Fiber Optic

### Views

Sea  
Mountain  
Panoramic  
Country  
Garden  
Pool  
Golf

### Pool

Communal  
Garden  
Landscaped

### Category

Golf  
Luxury

### Orientation

South West

### Setting

Close To Shops  
Close To Schools  
Frontline Golf

### Furniture

Fully Furnished

### Security

Gated Complex  
24 Hour Security  
Alarm System  
Entry Phone

### Climate Control

Air Conditioning

### Condition

Excellent

### Kitchen

Fully Fitted

### Parking

Private  
More Than One