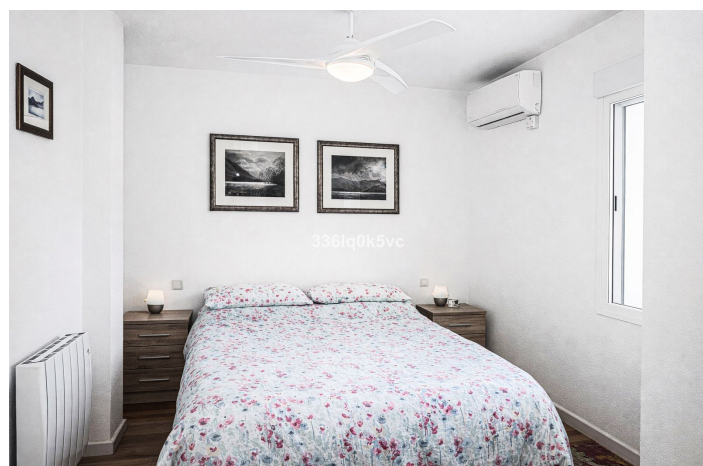
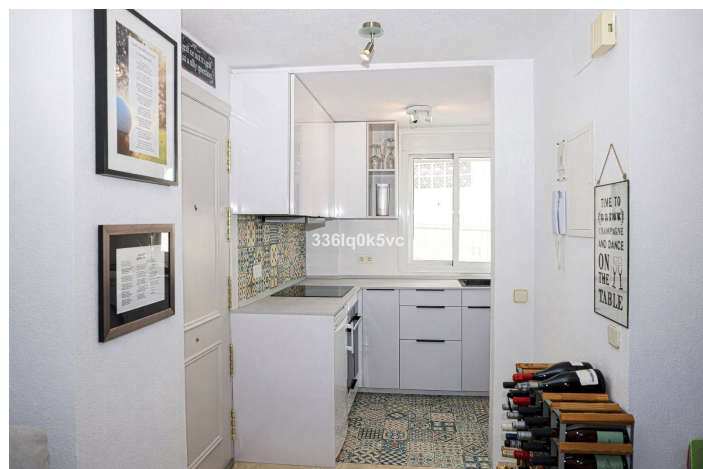




Penthouse for sale in Benahavís, Benahavís

320,000 €

Reference: HQ5258848 Bedrooms: 2 Bathrooms: 2 Build Size: 75m² Terrace: 15m²





Costa del Sol, Benahavís

Luxury Penthouse with 2 Bedrooms and 2 Bathrooms in the Heart of Benahavís Village Discover this beautiful penthouse located in the charming village of Benahavís, known for its picturesque streets, excellent restaurants and peaceful natural surroundings. The property offers two spacious bedrooms and two modern bathrooms, including a stylish newly renovated en-suite bathroom in the master bedroom. The fully renovated kitchen is equipped with quality appliances, and the entire apartment benefits from new window frames with high-efficiency glass for optimal comfort and insulation. New air-conditioning units have also been installed throughout the apartment, including both bedrooms, ensuring a pleasant indoor climate all year round. From the penthouse you can enjoy stunning views of the surrounding mountains and countryside. Sports and outdoor activities are close by, making this the perfect location for lovers of hiking, golf and nature. The building features a lift and includes a private parking space and storage room – a real advantage within the village. About Benahavís Village Benahavís is one of the most desirable and authentic whitewashed villages on the Costa del Sol. Often referred to as the “gastronomic village” of the region, it is renowned for its many high-quality restaurants and tapas bars. Surrounded by mountains, rivers and lush valleys, Benahavís offers a serene natural environment while still being just a short drive from Marbella, Puerto Banús and the coast. It is a safe, friendly community with a relaxed lifestyle and true Andalusian charm. This penthouse is the ideal home for anyone seeking quality, comfort and a beautiful setting.



Features:

Features

Lift
Private Terrace
Storage Room
Ensuite Bathroom
Marble Flooring
Fitted Wardrobes
Wood Flooring

Views

Mountain
Panoramic

Pool

Communal

Security

Entry Phone

Orientation

North East

Setting

Close To Shops
Village
Mountain Pueblo

Furniture

Optional

Parking

Underground
Private

Climate Control

Air Conditioning
Cold A/C
Hot A/C

Condition

Excellent

Kitchen

Fully Fitted

Category

Holiday Homes
Investment