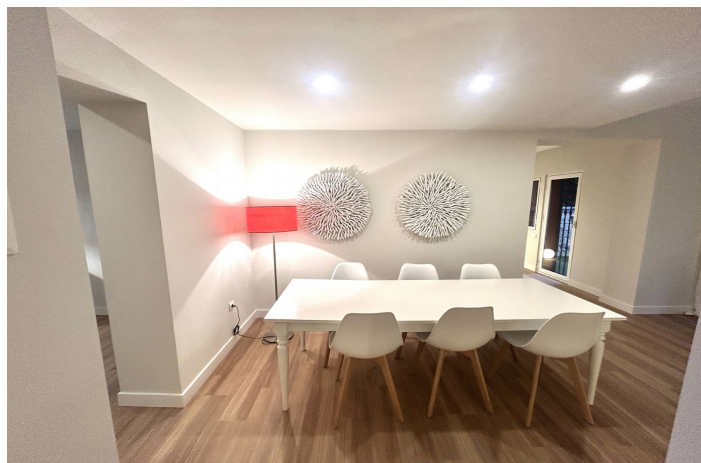




Semi-Detached House for sale in Atalaya, Estepona

690,000 €

Reference: HQ5251573 Bedrooms: 4 Bathrooms: 3 Plot Size: 250m² Build Size: 285m² Terrace: 100m²





Costa del Sol, Atalaya

Large house ready to go in to live; From the beautiful front garden and through a stone staircase you access the entrance of the house open to a large living room with fireplace that has plenty of light all day as it is south orientation; on this floor there is also a separate kitchen, with small dining room, that gives the access garden, a guest toilet and a small extra room perfect for office, or for room to play, from which you pass to the private garage covered with The house is the Lomas de Monte Biarritz one of the most beautiful and well-kept urbanizations in the area; On the first floor there are 3 bedrooms, the master with en-suite bathroom, closet area and access to two terraces one of them huge solarium type; , the other two rooms also have fitted wardrobes and share another bathroom; the house has a more attic floor where a small room is located with a large terrace that enjoys wide views. The house has recently been completely renovated by architects; so this list to enter to live and by its orientation, has a lot of light all day; the community is very well maintained and managed. It has large and beautiful gardens and 2 swimming pools, one of adults and another of children; It is a perfect house for families with children, since there is a lot of atmosphere; and it is perfect for living all year round; since it is next to all services: The Guadalmina Shopping Centre also the Atalaya and San José schools in Guadalmina are next to it; Call us and we teach you!!



Features:

Features

Covered Terrace
Near Transport
Private Terrace
Marble Flooring
Double Glazing
Fitted Wardrobes
Solarium
Games Room
Utility Room
Wood Flooring

Views

Panoramic
Country
Garden
Pool

Pool

Communal

Garden

Private

Energy Rating

C

Orientation

South

Setting

Close To Golf
Close To Port
Close To Sea
Close To Shops
Close To Town
Close To Schools

Furniture

Not Furnished

Security

Gated Complex
Electric Blinds

CO2 Emission Rating

C

Climate Control

Fireplace

Condition

Good
Excellent
Recently Renovated
New Construction

Kitchen

Partially Fitted

Parking

Private